

orbiTM PRO

Quick Start Guide

NETGEAR
BUSINESS

Set Up the Orbi Pro Router and Satellite

You can wall-mount or ceiling-mount the Orbi Pro router and satellite. For more information about mounting, see the other side of this document. To set up your router and satellite, you can use the NETGEAR Orbi app or a web browser.

NETGEAR Orbi App Setup

1. Scan a QR code or search for NETGEAR Orbi in the Apple App Store or Google Play Store.



2. Download and launch the NETGEAR Orbi app on your mobile device and follow the prompts.



Orbi Pro Satellite Ring LED

The Orbi Pro satellite's ring LED lights white while the satellite attempts to sync with the Orbi Pro router. After the Orbi Pro satellite's ring LED lights white, it lights one of the following colors for about three minutes and then turns off:

- **Blue**
The connection between the Orbi Pro router and Orbi Pro satellite is good.
- **Amber**
The connection between the Orbi Pro router and Orbi Pro satellite is fair. Consider moving the Orbi Pro satellite closer to the Orbi Pro router.
- **Magenta**
The Orbi Pro satellite was unable to connect to the Orbi Pro router. Move the Orbi Pro satellite closer to the Orbi Pro router.

Note: If the ring LED still lights magenta after about one minute, press the **Sync** button on the back of the Orbi Pro router and on the back of the Orbi Pro satellite. When the Orbi Pro satellite syncs with the Orbi Pro router, the satellite's ring LED lights white then lights blue to indicate a good connection, and then turns off.

Web Browser Setup

1. Unplug your modem, remove and reinsert the backup battery if it uses one, and plug the modem back in.
2. Use an Ethernet cable to connect your modem to the yellow Internet port on your Orbi Pro router.
Note: If you want to connect your Orbi Pro router to an existing gateway, we recommend that you turn off your existing gateway's WiFi.
3. Connect your Orbi Pro router to a power source.



The Power LED on the back of the Orbi Pro router lights green. If the Power LED does not light, press the **Power On/Off** button.

4. Wait for the Orbi Pro router's ring LED to light white.
5. Place the Orbi Pro satellite in a central location for the best WiFi coverage.
6. Connect the Orbi Pro satellite to a power source.
The Power LED on the back of the Orbi Pro satellite lights green. If the Power LED does not light, press the **Power On/Off** button.
7. Connect your computer or mobile device to the Orbi Pro router or satellite with an Ethernet or WiFi connection:
 - **Ethernet.** Use an Ethernet cable to connect your computer to the Orbi Pro router or satellite.
 - **WiFi.** Use the preassigned WiFi network name (SSID) and password on the label of the Orbi Pro router or satellite to connect to the Orbi WiFi network.

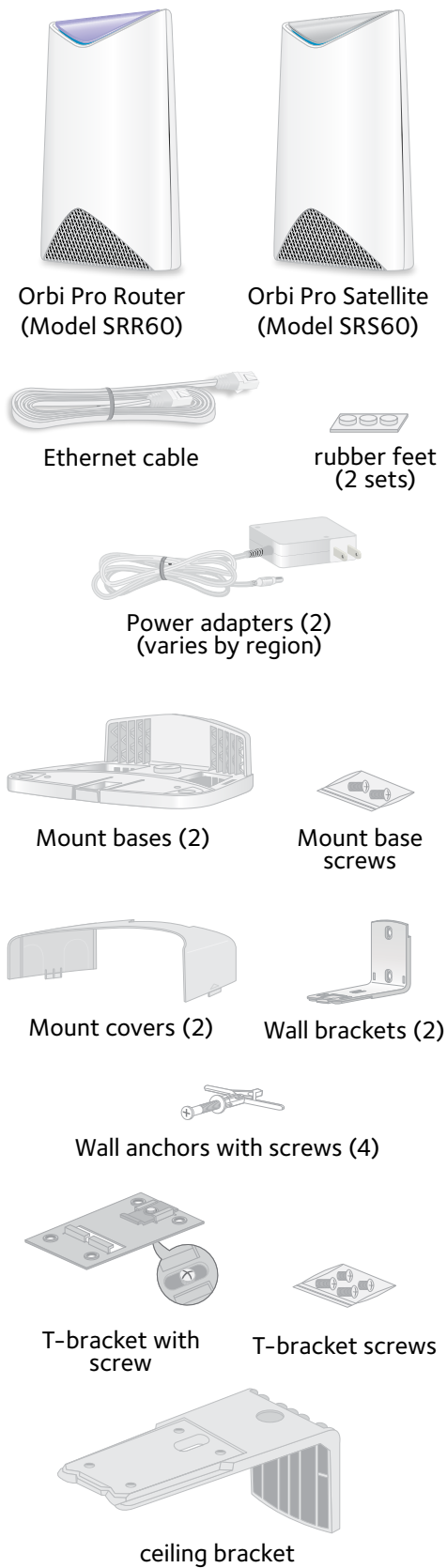


8. Launch a web browser and visit orbilogin.com.
9. If a login window opens, enter the user name and password.
The user name is **admin** and the default password is **password**.
10. Follow the onscreen instructions.
The Orbi Pro router's ring LED turns off after the setup is complete.



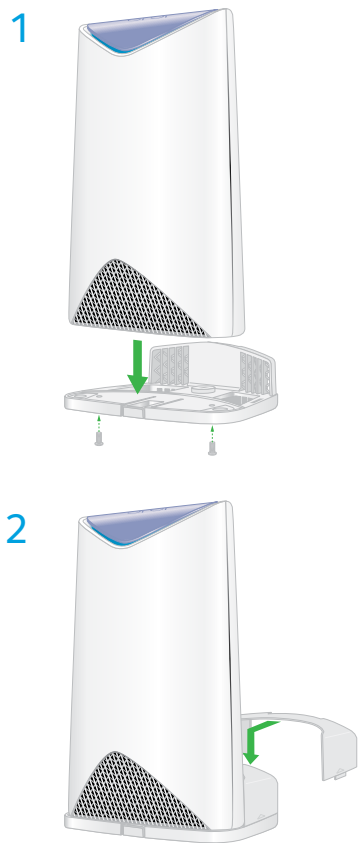
201-21716-03

Package Contents



Attach the Mounting Base

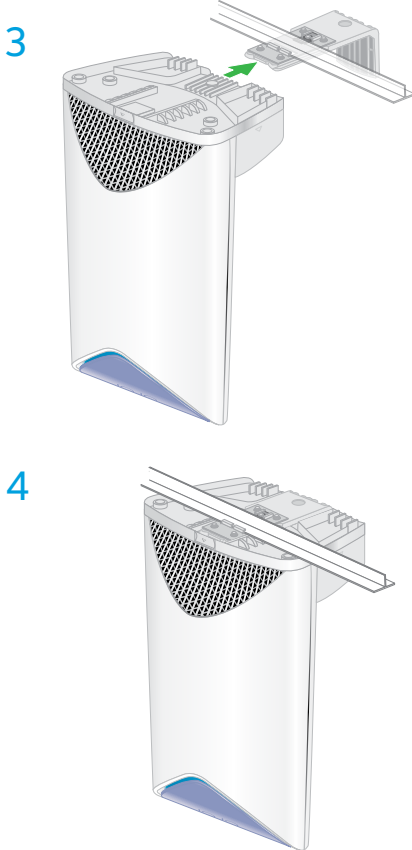
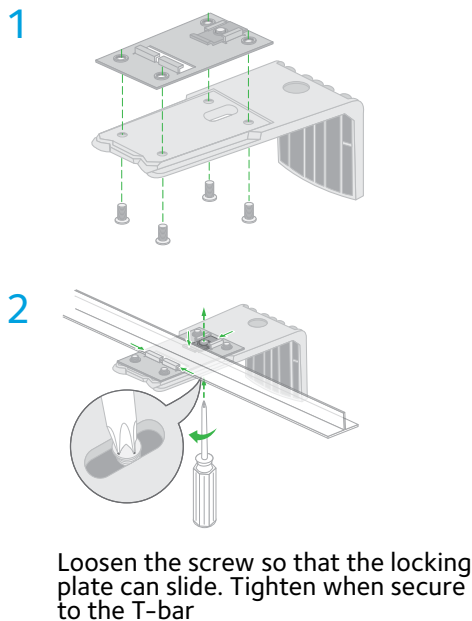
Attach the mounting base and the mount cover for wall-mounting or ceiling-mounting.



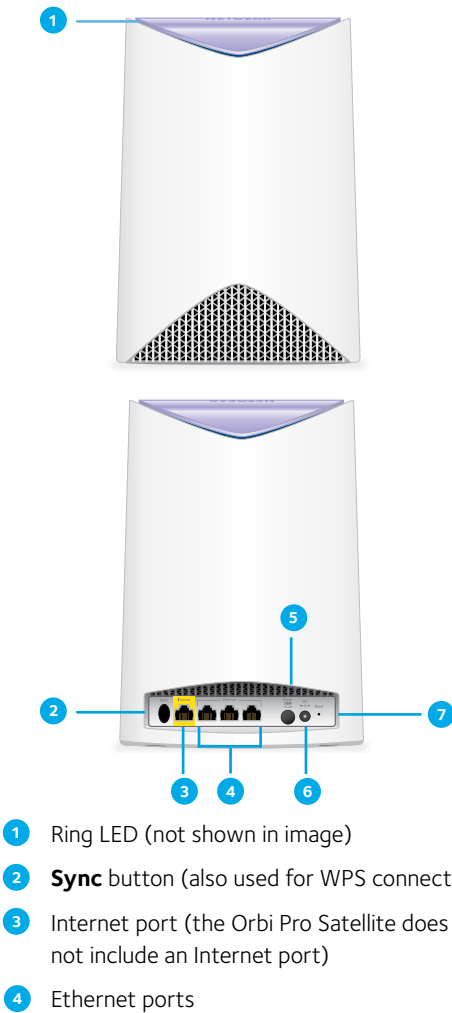
Wall-Mounting



Ceiling-Mounting



Orbi Pro Router Overview



Support

Thank you for purchasing this NETGEAR product. You can visit www.netgear.com/support to register your product, get help, access the latest downloads and user manuals, and join our community. We recommend that you use only official NETGEAR support resources.

Si ce produit est vendu au Canada, vous pouvez accéder à ce document en français canadien à <http://downloadcenter.netgear.com/other/>.

(If this product is sold in Canada, you can access this document in Canadian French at <http://downloadcenter.netgear.com/other/>.)

For the current EU Declaration of Conformity, visit <http://kb.netgear.com/11621>.

For regulatory compliance information, visit <http://www.netgear.com/about/regulatory/>. See the regulatory compliance document before connecting the power supply.

© NETGEAR, Inc., NETGEAR and the NETGEAR Logo are trademarks of NETGEAR, Inc. Any non-NETGEAR trademarks are used for reference purposes only.

NETGEAR, Inc.
350 East Plumeria Drive
San Jose, CA 95134, USA

August 2017

Orbi Pro Satellite Overview



NETGEAR INTL LTD
Building 3, University Technology Centre
Curraheen Road, Cork, Ireland