

orbi™ PRO

Quick Start Guide

Orbi Pro Satellite Overview

You can place the Orbi Pro satellite on a flat surface, or you can wall-mount or ceiling-mount it. For information about wall-mounting and ceiling-mounting, see the other side of this document.

To sync your Orbi Pro satellite with the Orbi Pro router, you can use the NETGEAR Orbi app or you can sync the satellite manually.



- 1 Ring LED (not shown in image)
- 2 **Sync** button (also used for WPS connection)
- 3 Ethernet ports
- 4 **Power On/Off** button and Power LED
- 5 DC Power connector
- 6 **Reset** button

Sync Your Satellite With the NETGEAR Orbi App

1. Scan a QR code or search for NETGEAR Orbi in the Apple App Store or Google Play Store.



2. Download and launch the NETGEAR Orbi app on your mobile device and follow the prompts.



Orbi Pro Satellite Ring LED

The Orbi Pro satellite's ring LED lights white while the satellite attempts to sync with the Orbi Pro router. After the Orbi Pro satellite's ring LED lights white, it lights one of the following colors for about three minutes and then turns off:

- Blue**
The connection between the Orbi Pro router and Orbi Pro satellite is good.
- Amber**
The connection between the Orbi Pro router and Orbi Pro satellite is fair. Consider moving the Orbi Pro satellite closer to the Orbi Pro router.
- Magenta**
The Orbi Pro satellite was unable to connect to the Orbi Pro router. Move the Orbi Pro satellite closer to the Orbi Pro router.

Manually Sync Your Satellite With Your Router

If you don't want to use the app to sync your Orbi Pro satellite with your Orbi Pro router, follow these steps:

1. Place the Orbi Pro satellite in a central location for the best WiFi coverage.
2. Connect the Orbi Pro satellite to a power source.
The Power LED on the back of the Orbi Pro satellite lights green. If the Power LED does not light, press the **Power On/Off** button.
3. Press the **Sync** button on the back of your satellite, and within two minutes, press the **Sync** button on the back of your router.
The Orbi Pro router's ring LED turns off after the setup is complete.

NETGEAR
BUSINESS



201-22245-01

August 2017

NETGEAR, Inc.
350 East Plumeria Drive
San Jose, CA 95134, USA

CE **NETGEAR INTL LTD**
Building 3, University Technology Centre
Curraheen Road, Cork, Ireland

© NETGEAR, Inc., NETGEAR and the NETGEAR Logo are trademarks of NETGEAR, Inc. Any non-NETGEAR trademarks are used for reference purposes only.

Package Contents



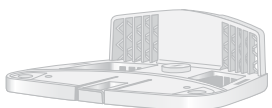
Orbi Pro satellite
(Model SRS60)



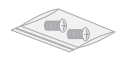
Power adapter
(varies by region)



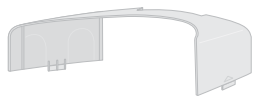
Rubber feet



Mount base



Mount base screws



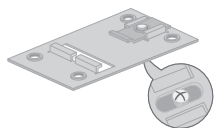
Mount cover



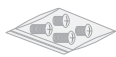
Wall bracket



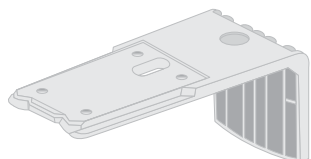
Wall anchors with
screws (2)



T-bracket with
screw



T-bracket screws



Ceiling bracket

Attach the Mount Base

Attach the mount base and the mount cover for wall-mounting or ceiling-mounting.

1

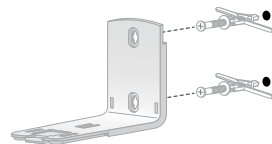


2



Wall-Mounting

1

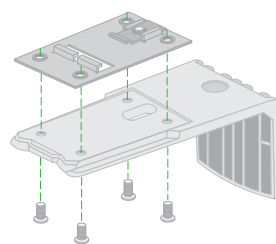


2

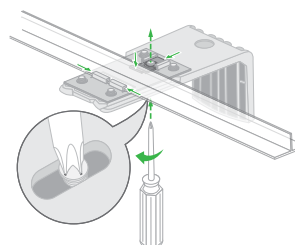


Ceiling-Mounting

1

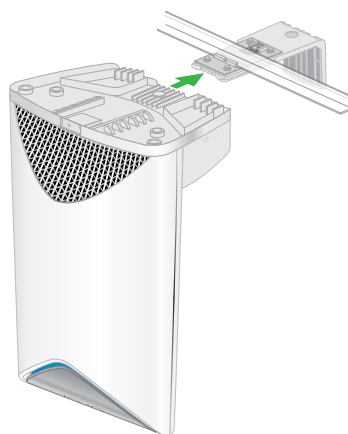


2



Loosen the screw so that the locking plate can slide. Then tighten to secure to the T-bar.

3



4



Support

Thank you for purchasing this NETGEAR product. You can visit www.netgear.com/support to register your product, get help, access the latest downloads and user manuals, and join our community. We recommend that you use only official NETGEAR support resources.

Si ce produit est vendu au Canada, vous pouvez accéder à ce document en français canadien à <http://downloadcenter.netgear.com/other/>.

(If this product is sold in Canada, you can access this document in Canadian French at <http://downloadcenter.netgear.com/other/>.)

For the current EU Declaration of Conformity, visit <http://kb.netgear.com/11621>.

For regulatory compliance information, visit <http://www.netgear.com/about/regulatory/>.

See the regulatory compliance document before connecting the power supply.