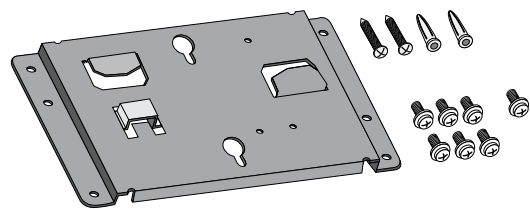


# Installation

## NETGEAR ProSAFE Dual Band Wireless AC

### Access Point

Ceiling and Wall Installation Kit



### Package Contents

- Mounting bracket
- Two wall screws
- Two wall anchors
- Six mounting screws with integrated washers
- T-bar screw

NETGEAR®

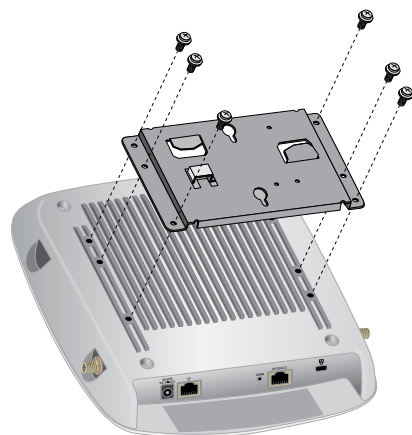
### Drop Ceiling Installation

Before mounting the access point in a high location, first set up and test the unit to verify wireless network connectivity.

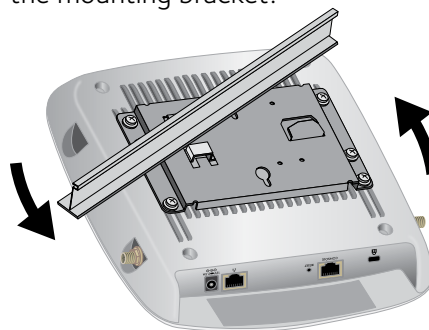
If you are mounting the access point on a hard ceiling, use the wall installation instructions.

#### ➤ To mount your access point to a ceiling:

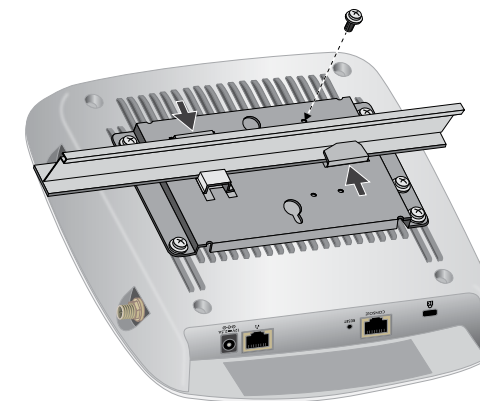
1. Attach the mounting bracket to the access point using the six mounting screws.



2. Place the access point so that the ceiling rail is between the two tabs on the mounting bracket.



3. Twist the access point to hang it from the ceiling rail.

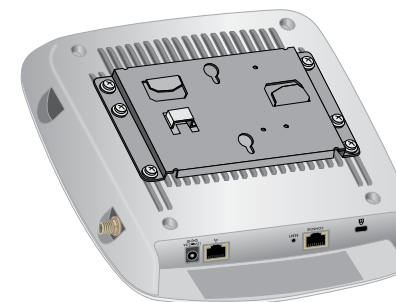


4. Secure the access point to the ceiling rail using the T-bar screw.

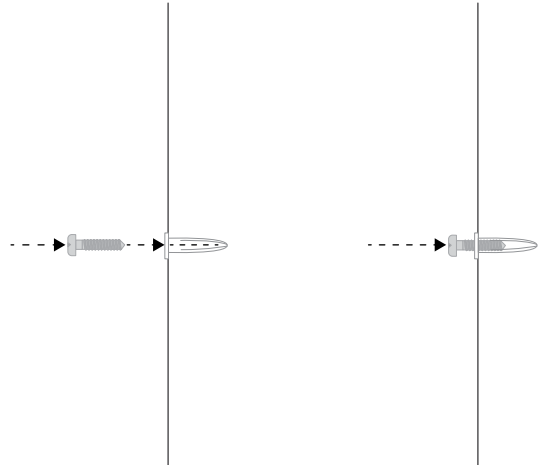
### Wall Installation

#### ➤ To mount your access point to a wall:

1. Place the mounting bracket on the wall where you want to mount the access point.
2. Mark the wall where the two mounting holes are.
3. Attach the mounting bracket to the access point using the six mounting screws as shown.

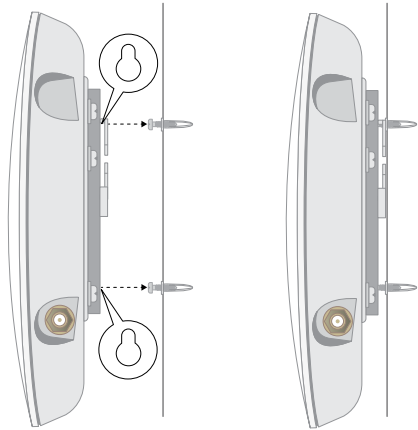


4. Attach the wall anchors and screws to the wall where you previously marked.



Leave a space  $\frac{1}{8}$  of an inch (3.5 mm) wide between the head of the screws and the wall

5. Hang the access point on the screws by inserting the screws into the larger portion of the slot and sliding the unit down.



August 2015

**NETGEAR, Inc.**  
350 East Plumeria Drive  
San Jose, CA 95134, USA

## Support

Thank you for selecting NETGEAR products. After installing your device, locate the serial number on the label of your product and use it to register your product at <https://my.netgear.com>.

You must register your product before you can use NETGEAR telephone support. NETGEAR recommends registering your product through the NETGEAR website. For product updates and web support, visit <http://support.netgear.com>.

NETGEAR recommends that you use only the official NETGEAR support resources.

For the current EU Declaration of Conformity, visit [http://support.netgear.com/app/answers/detail/a\\_id/11621/](http://support.netgear.com/app/answers/detail/a_id/11621/).

For regulatory compliance information, visit <http://www.netgear.com/about/regulatory/>.

See the regulatory compliance document before connecting the power supply.

© NETGEAR, Inc., NETGEAR and the NETGEAR Logo are trademarks of NETGEAR, Inc. Any non-NETGEAR trademarks are used for reference purposes only.