

NETGEAR 54 Mbps Wireless USB 2.0 Adapter WG111v3 User Manual



NETGEAR®

NETGEAR, Inc.
4500 Great America Parkway
Santa Clara, CA 95054 USA

202-10240-01
April 2007

Technical Support

For customer support see http://kbserver.netgear.com/kb_web_files/n10005.asp

NETGEAR, INC. Support Information

Phone: 1-888-NETGEAR, for US & Canada only. For other countries, see your support information card.

E-mail: support@netgear.com

North American NETGEAR website: <http://www.netgear.com>

Statement of Conditions

In the interest of improving internal design, operational function, and/or reliability, NETGEAR reserves the right to make changes to the products described in this document without notice.

NETGEAR does not assume any liability that may occur due to the use or application of the product(s) or circuit layout(s) described herein.

© 2007 NETGEAR, Inc. NETGEAR, the NETGEAR logo, The Gear Guy and Everybody's Connecting are trademarks or registered trademarks of NETGEAR, Inc. in the United States and/or other countries. Microsoft and Windows are registered trademarks of Microsoft Corporation in the United States and/or other countries. Other brand and product names are trademarks or registered trademarks of their respective holders. Information is subject to change without notice. All rights reserved.

Maximum Wireless Signal Rate Derived from IEEE Standard 802.11 Specifications

Actual data throughput will vary. Network conditions and environmental factors, including volume of network traffic, building materials and construction, and network overhead, lower actual data throughput rate.

Safety and Regulatory Notices

FCC Statement

The WG111v3 has been tested and complies with the specifications for a Class B digital device, pursuant to Part 15 of the FCC Rules.

Operation is subject to the following two conditions:

- (1) This device may not cause harmful interference, and
- (2) This device must accept any interference received, including interference that may cause undesired operation.

These limits are designed to provide reasonable protection against harmful interference in a residential installation. This equipment generates, uses, and can radiate radio frequency energy and, if not installed and used according to the instructions, may cause harmful interference to radio communications. However, there is no guarantee that interference will not occur in a particular installation. If this equipment does cause harmful interference to radio or television reception, which is found by turning the equipment off and on, the user is encouraged to try to correct the interference by one or more of the following measures:

- Reorient or relocate the receiving antenna
- Increase the separation between the equipment or devices
- Connect the equipment to an outlet other than the receiver's
- Consult a dealer or an experienced radio/TV technician for assistance

FCC Caution: Any change or modification to the product not expressly approved by Netgear could void the user's authority to operate the device.

FCC RF Radiation Exposure and SAR Statements

SAR Statement

The Netgear WG111v3 has been tested for body-worn Specific Absorption Rate (SAR) compliance. The FCC has established detailed SAR requirements and has established that these requirements have been met while installed in host notebook computer.

RF Exposure Information

The radio module has been evaluated under FCC Bulletin OET 65C (01-01) and found to be compliant to the requirements as set forth in CFR 47 Sections, 2.1093, and 15.247 (b) (4) addressing RF Exposure from radio frequency devices. This model meets the applicable government requirements for exposure to radio frequency waves. The highest SAR level measured for this device was 1.3 W/kg.

Canadian Department of Communications Industry Canada (IC) Notice

This Class B digital apparatus complies with Canadian ICES-003 and RSS-210. Cet appareil numérique de la classe B est conforme à la norme NMB-003 et CNR-210 du Canada.

“To prevent radio interference to the licensed service, this device is intended to be operated indoors and away from windows to provide maximum shielding. Equipment (or its transmit antenna) that is installed outdoors is subject to licensing.”

“Pour empêcher que cet appareil cause du brouillage au service faisant l'objet d'une licence, il doit être utilisé à l'intérieur et devrait être placé loin des fenêtres afin de fournir un écran de blindage maximal. Si le matériel (ou son antenne d'émission) est installé à l'extérieur, il doit faire l'objet d'une licence.”

Europe - EU Declaration of Conformity with Regard to R&TTE Directive 1999/5/EC

A printed copy of the EU Declaration of Conformity certificate for this product is provided in the WG111v3 product package.

Ěesky [Czech]	NETGEAR, Inc. tímto prohlašuje, že tento NETGEAR 54 Mbps Wireless USB2.0 Adapter WG111v3 je ve shodě se základními požadavky a dalšími příslušnými ustanoveními směrnice 1999/5/ES.
Dansk [Danish]	Undertegnede NETGEAR, Inc. erklærer herved, at følgende udstyr NETGEAR 54 Mbps Wireless USB2.0 Adapter WG111v3 overholder de væsentlige krav og øvrige relevante krav i direktiv 1999/5/EF.
Deutsch [German]	Hiermit erkläre NETGEAR, Inc., dass sich das Gerät NETGEAR 54 Mbps Wireless USB2.0 Adapter WG111v3 in Übereinstimmung mit den grundlegenden Anforderungen und den übrigen einschlägigen Bestimmungen der Richtlinie 1999/5/EG befindet.
Eesti [Estonian]	Käesolevaga kinnitab NETGEAR, Inc. seadme NETGEAR 54 Mbps Wireless USB2.0 Adapter WG111v3 vastavust direktiivi 1999/5/EÜ põhinõuetele ja nimetatud direktiivist tulenevatele teistele asjakohastele sätetele.

English	Hereby, NETGEAR, Inc., declares that this NETGEAR 54 Mbps Wireless USB2.0 Adapter WG111v3 is in compliance with the essential requirements and other relevant provisions of Directive 1999/5/EC.
Español [Spanish]	Por medio de la presente NETGEAR, Inc. declara que el NETGEAR 54 Mbps Wireless USB2.0 Adapter WG111v3 cumple con los requisitos esenciales y cualesquiera otras disposiciones aplicables o exigibles de la Directiva 1999/5/CE.
Ελληνική [Greek]	ΜΕ ΤΗΝ ΠΑΡΟΥΣΑ NETGEAR, Inc. ΔΗΛΩΝΕΙ ΟΤΙ NETGEAR 54 Mbps Wireless USB2.0 Adapter WG111v3 ΣΥΜΜΟΡΦΩΝΕΤΑΙ ΠΡΟΣ ΤΙΣ ΟΥΣΙΩΔΕΙΣ ΑΠΑΙΤΗΣΕΙΣ ΚΑΙ ΤΙΣ ΛΟΙΠΕΣ ΣΧΕΤΙΚΕΣ ΔΙΑΤΑΞΕΙΣ ΤΗΣ ΟΔΗΓΙΑΣ 1999/5/ΕΚ.
Français [French]	Par la présente NETGEAR, Inc. déclare que l'appareil NETGEAR 54 Mbps Wireless USB2.0 Adapter WG111v3 est conforme aux exigences essentielles et aux autres dispositions pertinentes de la directive 1999/5/CE.
Italiano [Italian]	Con la presente NETGEAR, Inc. dichiara che questo NETGEAR 54 Mbps Wireless USB2.0 Adapter WG111v3 è conforme ai requisiti essenziali ed alle altre disposizioni pertinenti stabilite dalla direttiva 1999/5/CE.
Latviski [Latvian]	Ar šo NETGEAR, Inc. deklarā, ka NETGEAR 54 Mbps Wireless USB2.0 Adapter WG111v3 atbilst Direktīvas 1999/5/EK būtiskajām prasībām un citiem ar to saistītajiem noteikumiem.
Lietuvių [Lithuanian]	Šiuo NETGEAR, Inc. deklaruoja, kad šis NETGEAR 54 Mbps Wireless USB2.0 Adapter WG111v3 atitinka esminius reikalavimus ir kitas 1999/5/EB Direktyvos nuostatas.
Nederlands [Dutch]	Hierbij verklaart NETGEAR, Inc. dat het toestel NETGEAR 54 Mbps Wireless USB2.0 Adapter WG111v3 in overeenstemming is met de essentiële eisen en de andere relevante bepalingen van richtlijn 1999/5/EG.
Malti [Maltese]	Hawnhekk, NETGEAR, Inc., jiddikjara li dan NETGEAR 54 Mbps Wireless USB2.0 Adapter WG111v3 jikkonforma mal-tijiet essenzjali u ma provvedimenti orajn rilevanti li hemm fid-Direttiva 1999/5/EC.
Magyar [Hungarian]	Alulírott, NETGEAR, Inc. nyilatkozom, hogy a NETGEAR 54 Mbps Wireless USB2.0 Adapter WG111v3 megfelel a vonatkozó alapvető követelményeknek és az 1999/5/EC irányelv egyéb előírásainak.
Polski [Polish]	Niniejszym NETGEAR, Inc. oświadczam, że NETGEAR 54 Mbps Wireless USB2.0 Adapter WG111v3 jest zgodny z zasadniczymi wymogami oraz pozostałymi stosownymi postanowieniami Dyrektywy 1999/5/EC.
Português [Portuguese]	NETGEAR, Inc. declara que este NETGEAR 54 Mbps Wireless USB2.0 Adapter WG111v3 está conforme com os requisitos essenciais e outras disposições da Directiva 1999/5/CE.
Slovensko [Slovenian]	NETGEAR, Inc. izjavlja, da je ta NETGEAR 54 Mbps Wireless USB2.0 Adapter WG111v3 v skladu z bistvenimi zahtevami in ostalimi relevantnimi določili direktive 1999/5/ES.
Slovensky [Slovak]	NETGEAR, Inc. týmto vyhlasuje, že NETGEAR 54 Mbps Wireless USB2.0 Adapter WG111v3 spáda základné požiadavky a všetky príslušné ustanovenia Smernice 1999/5/ES.

Suomi [Finnish]	NETGEAR, Inc. vakuuttaa täten että NETGEAR 54 Mbps Wireless USB2.0 Adapter WG111v3 tyyppinen laite on direktiivin 1999/5/EY oleellisten vaatimusten ja sitä koskevien direktiivin muiden ehtojen mukainen.
Svenska [Swedish]	Härmed intygar NETGEAR, Inc. att denna NETGEAR 54 Mbps Wireless USB2.0 Adapter WG111v3 står i överensstämmelse med de väsentliga egenskapskrav och övriga relevanta bestämmelser som framgår av direktiv 1999/5/EG.

Product and Publication Details

Model Number:	WG111v3
Publication Date:	April 2007
Product Family:	Wireless Adapter
Product Name:	NETGEAR 54 Mbps Wireless USB2.0 Adapter WG111v3
Home or Business Product:	Home
Language:	English
Publication Part Number:	202-10240-01

Contents

About This Manual

Audience, Conventions, and Scope	ix
--	----

Basic Setup

What You Need Before You Begin	1
Verify System Requirements	1
Observe Wireless Location and Range Guidelines	1
What Is in the Box	2
Default Wireless Settings	2
Installation Instructions	3
Connecting to Wireless Networks and the Internet	6
The Smart Wizard Status Bar	7
Icon Colors	8
Placing the USB Adapter Cradle	8
Removing the Software	9
Upgrading the Wireless Adapter Software	10

Network Connections and Wireless Security

Disabling the Windows Zero Configuration Utility	11
Understanding the Smart Wizard	12
Viewing Wireless Networks in Your Area	12
Finding a Network	14
Profiles	15
Adding Profiles	15
Setting up a Profile to Connect to an Access Point or Router	15
Setting up a Computer-to-Computer (Ad Hoc) Profile	17
Starting a Computer-to-Computer (Ad Hoc) Network Connection	19
Wireless Security	20
Know Your Wireless Network Settings	20
Wireless Network Name (SSID) and Security Settings	21

Setting up WEP Encryption Security	22
Setting up WPA2-PSK Security	23
Setting up WPA-PSK Security	24
Advanced Settings	25
Statistics Page	26
About Page	27
Troubleshooting	
Troubleshooting Tips	29
Ad Hoc Mode is Not Working Correctly	30
Default Configuration Settings and Technical Specifications	
Default Configuration Settings	31
Technical Specifications	32
Related Documents	

About This Manual


Audience, Conventions, and Scope


This manual assumes that you have basic to intermediate computer and Internet skills. However, tutorial information is provided on the NETGEAR website.

This manual uses the following typographical conventions:

<i>Italics</i>	Emphasis, books, CDs, URL names
Bold	User input


This manual uses the following formats to highlight special messages:

	Note: This format is used to highlight information of importance or special interest.
---	--

	Tip: This format is used to highlight a procedure that will save time or resources.
---	--

This manual is written according to these specifications:

<i>Product Version</i>	NETGEAR 54 Mbps Wireless USB2.0 Adapter WG111v3
Manual Publication Date	April 2007

	Note: Product updates in English language are available on the NETGEAR website at http://kbserver.netgear.com .
---	--

Basic Setup

The NETGEAR 54 Mbps Wireless USB2.0 Adapter WG111v3 lets you connect a PC computer to wireless networks. It is designed for PC computers running Microsoft Windows. For information about product features and compatible NETGEAR products, please see the NETGEAR website at <http://www.netgear.com>.

This chapter describes how to install your wireless USB adapter and set up basic wireless connectivity on your Wireless Local Area Network (WLAN). Advanced wireless network set up is covered in “[Network Connections and Wireless Security](#)” on page 11.

What You Need Before You Begin

You must verify that your computer meets the minimum system requirements and identify the wireless network settings of the wireless network where you will connect before you can set up your wireless USB adapter and connect.

Verify System Requirements

Before installing the Wireless Adapter, make sure that these minimum requirements have been met. You must have a computer with:

- A Pentium 300 MHz or higher compatible processor with an available USB port.
- A CD drive.
- 10 MB of free hard disk space.
- Windows 2000, XP, or Vista.

Observe Wireless Location and Range Guidelines

Computers can connect over wireless networks indoors at a range which vary significantly based on the location of the computer with the Wireless Adapter. For best results, avoid potential sources of interference, such as:

- Large metal surfaces
- Microwave ovens
- 2.4 GHz Cordless phones

In general, wireless devices can communicate through walls. However, if the walls are constructed with concrete, or have metal, or metal mesh, the effective range will decrease if such materials are between the devices.

What Is in the Box

The product package should contain the following items:

- NETGEAR 54 Mbps Wireless USB2.0 Adapter WG111v3
- Installation Guide
- Plastic cradle and fasteners to hold the WG111v3
- *NETGEAR CD*, including:
 - Driver and Configuration Utility Software
 - This User Manual
- Warranty and Support information card

If any of the parts are incorrect, missing, or damaged, contact your NETGEAR dealer. Keep the carton, including the original packing materials, in case you need to return the product.

Default Wireless Settings

If this is a new wireless network installation, use the factory default settings to set up the network and verify wireless connectivity. If this is an addition to an existing wireless network, you need the wireless network and wireless security settings that are already defined.

Your Wireless Adapter factory default basic settings are:

- Network Name Service Set Identification (SSID): **ANY**



Note: In order for the Wireless Adapter to communicate with a wireless access point or wireless adapter, all devices must be set up to use the same wireless network name (SSID).

- Network Mode (Infrastructure or Ad-hoc): **Infrastructure**
- Data security WEP, WPA2-PSK, or WPA-PSK encryption: **Disabled**

The section below provides instructions for setting up the Wireless Adapter for basic wireless connectivity to an access point.

Installation Instructions

The instructions in this chapter are for an Access Point (Infrastructure) installation. Wireless security, advanced settings, and Computer-to-Computer (Ad Hoc) instructions are covered in [“Network Connections and Wireless Security” on page 11](#).

Follow the instructions below to install the Wireless Adapter.

1. First, install the software. Insert the NETGEAR CD. If the CD main page does not appear, double click Autorun.exe on the CD.
 - a. Click Install the Software. The Check for Updates window will open.
 - b. If you are connected to the Internet, click Check for Updates. If not, you can choose to install from the CD.
 - c. When the Installation Complete message appears, click Next.
 - d. On the Smart Wizard screen, click Next to proceed with the Smart Wizard setup.

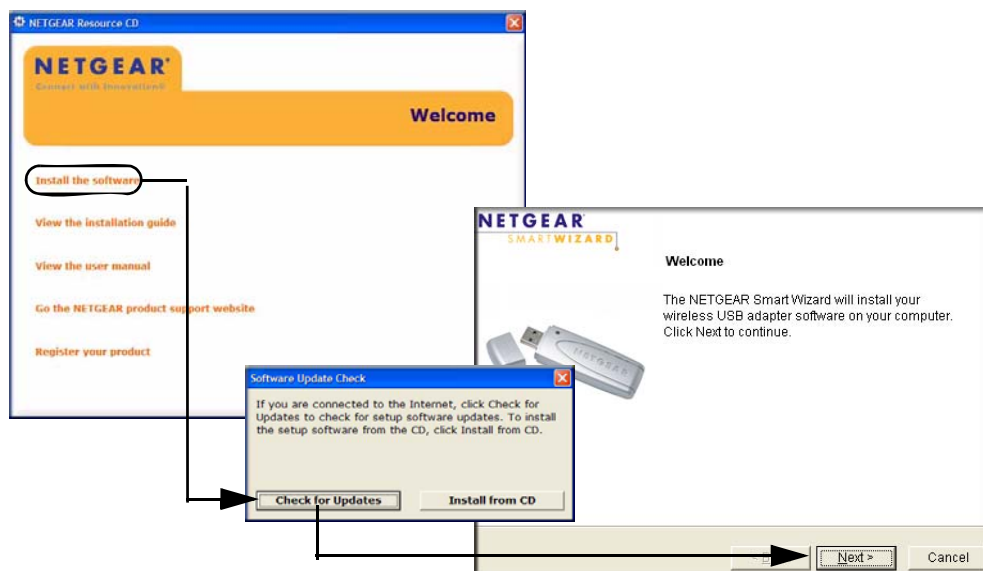


Figure 1

2. Now, when prompted, insert your wireless USB adapter.
 - a. Click **Next** to proceed. Windows will discover the adapter and continue the software installation process.

- b. Follow the Windows prompts to complete the software installation.
- c. If a Windows logo certification warning appears, click Continue to proceed with the installation.
- d. When the Windows software installation is complete, click Finish.



Figure 2

- 3. Windows 2000 users go to Step 4. Windows XP or Vista users can set up the wireless adapter either with the NETGEAR Smart Wizard (recommended) or the Windows Configuration Utilities.
 - **NETGEAR Smart Wizard:** Reveals more information about each network and makes it easier to troubleshoot network connection problems. See [“The Smart Wizard Status Bar” on page 7](#) and [“Statistics Page” on page 26](#).
 - **Windows Zero Configuration Utility:** See the Windows documentation or see the link to [“Windows XP and Vista Wireless Configuration Utilities” on page 33](#).




Figure 3

4. Use the Smart Wizard to set up your Wireless Adapter
 - a. When prompted, click Next to let the wizard help you connect to a network (recommended).



Figure 4

- b. Select the wireless network from the drop-down list, and the wizard records your choice.

	<p>Note: Hidden networks do not broadcast the Network Name (SSID). These networks are in the drop-down list, but the Network Name (SSID) is blank</p>
---	--

If the network uses security, then the Smart Wizard detects it..

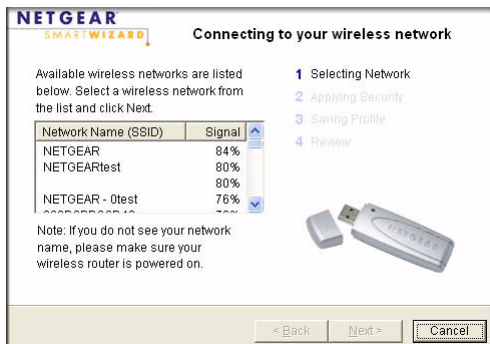



Figure 5

- c. Follow the Wizard steps for Security (if used) and for saving a Profile.
 - d. After you have reviewed the settings, click Finish.

The  icon appears in the System Tray and on the desktop. The wizard initiates your wireless connection. It could take up to a minute for your wireless connection to be established.

The Smart Wizard Settings page opens.

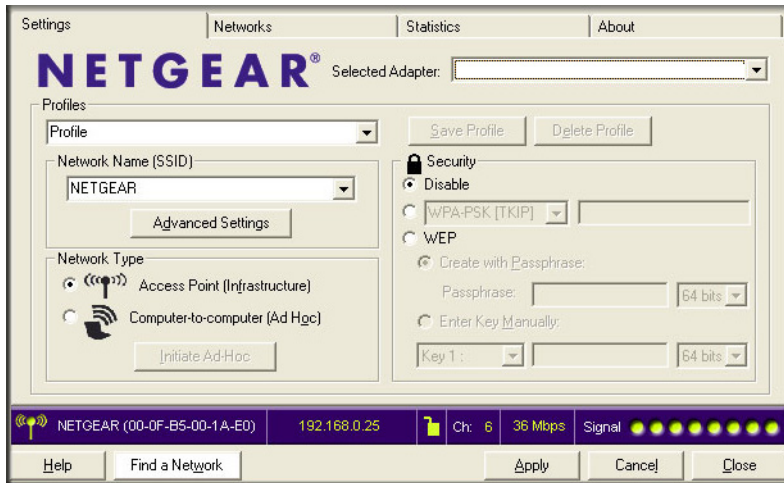


Figure 6


5. Use the status bar to verify your wireless connectivity. For more information about connecting, see [“Connecting to Wireless Networks and the Internet”](#) on page 6.




Note: For information about using Wi-Fi Multimedia (WMM), see [“Advanced Settings”](#) on page 25.

Connecting to Wireless Networks and the Internet

The Wireless Adapter has indicators that show the status of your connection to a wireless network and to the Internet:

-  **Icon:** After you install the software, this icon appears on the desktop and in the lower right of the Windows task bar. It is color coded to show the status of the connection. See [“The Smart Wizard Status Bar”](#) on page 7.
- **Smart Wizard Status Bar:** Clicking on the system tray icon opens the Smart Wizard. The status bar at the bottom of the page shows details about your wireless and Internet connection.

The Smart Wizard Status Bar

Click the  icon to open the Smart Wizard so you can view the status bar. The Smart Wizard Settings page opens. The status bar is at the bottom of the page.

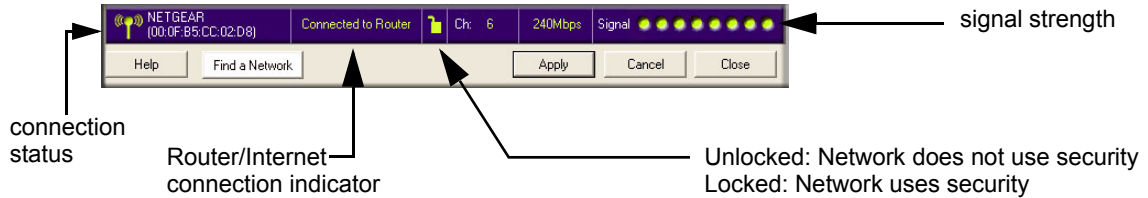


Figure 7

- **Connection Status:** The color shows the connection status.
- **Signal Strength:** Shows the signal strength of the wireless network. If the signal is poor, then try moving closer to the wireless access point.
- **Lock icon:** Shows if security is used on the network.
- **Router/Internet connection indicator:** This shows the progress of your connection. By default, this feature is on.



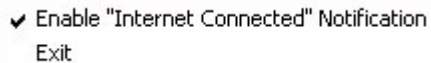
Figure 8

If you selected Europe during the WG111v3 installation, this feature is disabled.

The Router/Internet connection indicator is useful in isolating a problem. For example, if you are connected to a router, but not to the Internet, then check the router's Internet connection.

Connection Indicator	Description
Connected to Internet or IP Address	Wireless Internet connection OK.
Connected to Router	Wireless connection to router OK but no Internet connection at router.
____.____.____.____ or 169.254..x.x	Wireless connection to a router OK but there is a problem with the router. See "Troubleshooting" .

If you right-click the System Tray icon, you can disable the Internet notification feature by clearing the check mark on this line. If you do so, then only the IP address is shown.






✓ Enable "Internet Connected" Notification
Exit

Figure 9

If you selected Europe during the WG111v3 installation, you will not see the “Enable Internet Connected Notification” option.

Icon Colors

The icon is on the desktop and in the Windows System Tray. The System Tray resides on one end of the taskbar in the Microsoft Windows desktop.

Color	Condition	Description
Red 	The wireless USB adapter has no connection to any other wireless node.	The Wireless Adapter can not link to any other wireless node or the link is lost. Check your configuration or try moving to a location where the wireless signal quality is better.
Yellow 	The wireless USB adapter has a connection with another wireless node.	The wireless link is weak. You may need to move to a better spot, such as closer to the wireless access point. Also, look for possible interference such as a 2.4 GHz cordless phone or large metal surface.
Green 	The wireless USB adapter has a connection with another wireless node.	The wireless USB adapter has established good communication with an access point and the signal quality is strong.

Placing the USB Adapter Cradle

You can attach the Wireless Adapter directly to a USB port on your computer, or use the USB cable to extend the range and obtain better wireless reception.

Follow these instructions to use the USB cable, plastic cradle, and loop and hook fastener provided in the package for better USB Adapter placement on a notebook computer:

1. The Wireless Adapter comes with three black fasteners. Locate the one that has a prickly side and attach it to the plastic cradle on the middle of the outside rear.
2. Insert the Wireless Adapter in the plastic cradle.

3. Place one of the other pieces of loop and hook fastener on the back of the monitor near the top for better reception.



Tip: Place the last piece of fastener on the side of monitor nearest your wireless access point.

4. Join the pieces of the fastener to attach the USB Adapter in the plastic cradle to the notebook or desktop monitor.

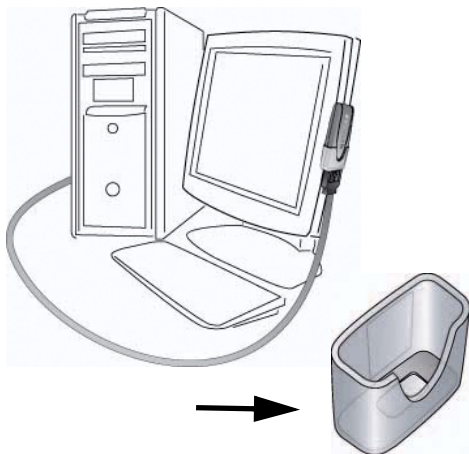


Figure 10

See the installation instructions for your operating system before attaching the USB cable to the USB Adapter and your computer

Removing the Software

You can remove the Wireless Adapter software in these two ways:

- Navigate the Windows Start menu to the NETGEAR 54 Mbps Wireless USB2.0 Adapter WG111v3 program group, select the uninstall option, and follow the screen prompts.
- Navigate the Windows Start menu to the Control Panel Add or Remove Program item, select the NETGEAR 54 Mbps Wireless USB2.0 Adapter WG111v3 option, and follow the screen prompts.

Upgrading the Wireless Adapter Software

Upgrades may be available at the NETGEAR website. To install an upgrade, follow these steps.

1. Go to <http://kbserver.netgear.com>
2. Click the latest version of upgrade.
3. Examine the Release Note. Make sure to read any warnings and Known Problems.
4. Download the upgrade using the link in the Release Note.
5. Follow the Release Note installation instructions.

Network Connections and Wireless Security

This chapter explains how to use your Wireless USB 2.0 Adapter to connect to your Wireless Local Area Network (WLAN) and how to set up wireless security for the Wireless USB 2.0 Adapter so that it matches the wireless security settings for your network.

If you chose the Windows XP or Windows Vista Configuration utility during installation, and now you want to use the Smart Wizard, then you need to disable the Windows utility. If you are working with the Vista configuration utility, see the online document: <http://documentation.netgear.com/reference/enu/winzerocfg/index.htm>

Disabling the Windows Zero Configuration Utility

To disable the Windows Zero Configuration utility:

1. Attach the wireless adapter to a USB port for your computer.
2. Go to Windows Start menu and select Network Connections.
3. On the Network connections page, select the Wireless Network Connection and right-click to choose the Properties option.

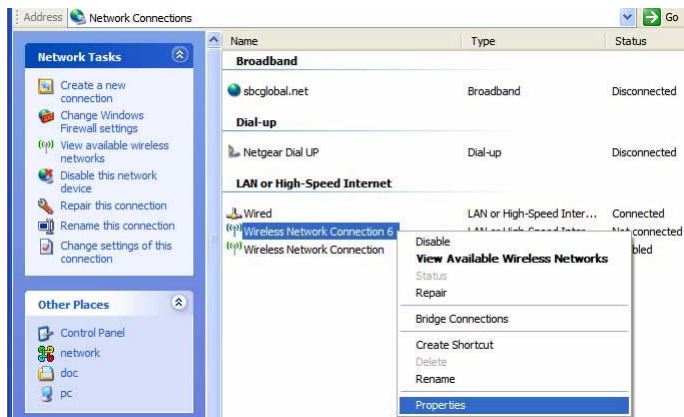



Figure 11

4. Click the Wireless Networks tab. Then clear the “Use Windows to configure my wireless settings” check box.

Understanding the Smart Wizard

These instructions explain how to use the NETGEAR WG111v3 Smart Wizard to change the WG111v3 wireless settings.

When you have installed the software from the *NETGEAR CD*, the  icon appears on your desktop and in the Windows System Tray. The Windows System Tray is located on the Windows taskbar. You can either double-click this icon on the desktop, or click it in the System Tray at any time, to use the Smart Wizard. This software automatically restarts when you reboot your computer.

The Smart Wizard provides a complete and easy to use set of tools to:


- View details about wireless networks in your area.
- Choose the network that you want to use.
- Configure wireless settings for your wireless USB adapter
- Save your wireless network settings in profiles.
- Remove or reinstall the wireless adapter software.

The following sections in this chapter explain how to use the Smart Wizard.

Viewing Wireless Networks in Your Area

You can use the Networks tab to view all available wireless networks in your area. You can also scan to search for wireless networks and refresh the page.

To view information about wireless networks:

1. Use the  icon to open the Smart Wizard. The Settings tab page opens.
2. Click the Networks tab to view the following page.

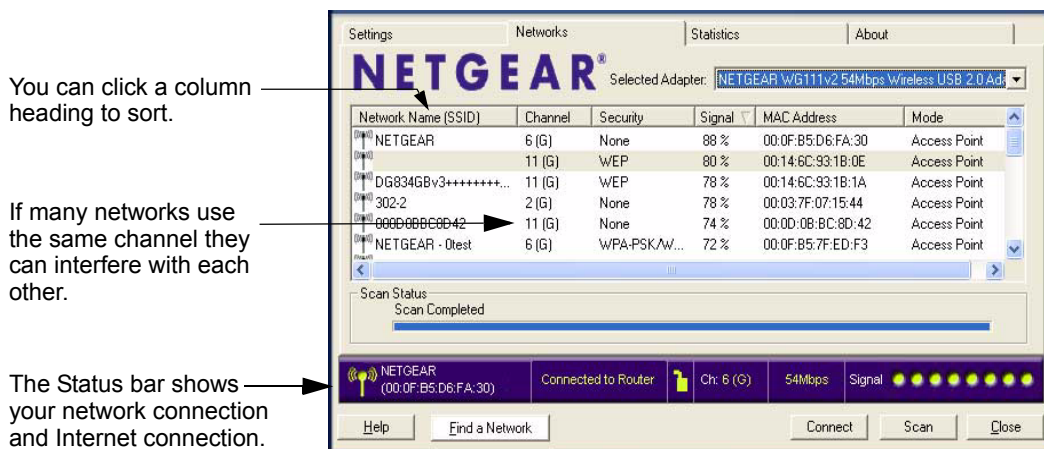


Figure 12

The screen shows the following information for each network scanned:

- **Network Name (SSID):** The name assigned to a wireless network. This is the same as the SSID or ESSID configuration parameter. Note that as a security measure, some wireless access points do not broadcast their SSID. In such cases, the SSID field will be blank even though the rest of the information will still be displayed.
- **Channel:** The channel determines which operating frequency will be used.
- **Security:** Identifies whether the wireless network uses WEP or WPA-PSK security settings.
- **Signal:** Identifies the signal strength of the communications.
- **MAC Address:** Identifies the hardware address (MAC Address) of the wireless device broadcasting this information.
- **Mode:** Identifies the type of wireless network — Access Point (Infrastructure) or Computer-to-Computer (Ad Hoc)

The buttons located at the bottom of the Networks tab are:

- **Help:** Display online help.
- **Find a Network:** Find and connect to a network. See [“Finding a Network”](#) on page 14.
- **Connect:** Connect to the network that you selected.
- **Scan:** Check for wireless networks. Clicking Scan refreshes the page.
- **Close:** Close the window of the Wizard.


Finding a Network

During the Wireless Adapter software installation, the Smart Wizard lists the available networks. After installation you can use the Find a Network button on the Network tab at any time to view the available networks and select the one that you want to use.



Note: Make sure that you know the security settings for the network that you want to use. For example, if WEP is used then you need to know the WEP key. If you use secure networks frequently, set up profiles for each network with the wireless network and security settings.

To find a Network, follow these steps:

1. Use the  icon to open the Smart Wizard.
The Settings tab page opens.
2. Click Find a Network.
3. Select a network from the drop-down list. If you select a hidden network then you must enter the SSID. Click Next.
4. Follow the steps of the wizard to specify the wireless security if used, and to create a profile.
5. Review you settings, and click Finish.:

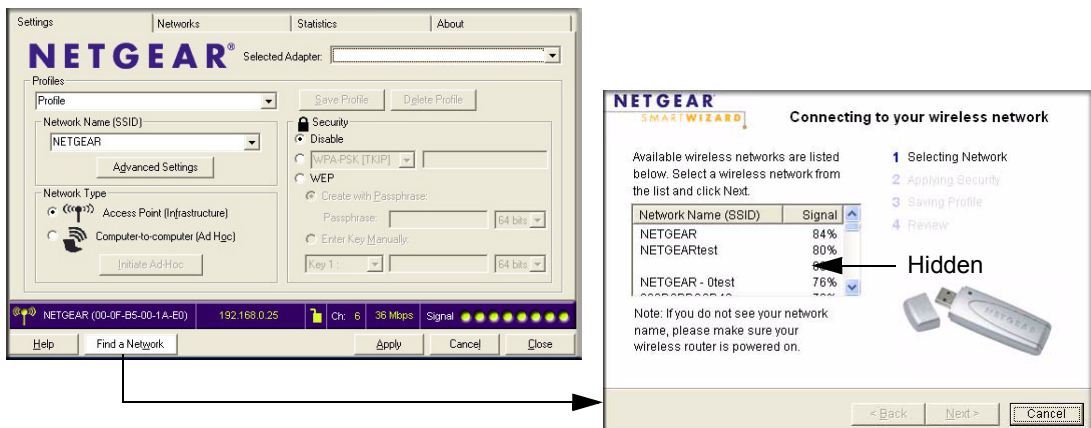


Figure 13

The Smart Wizard initiates your wireless connection. You can use the Status Bar to verify your network connection. For more information, see [“The Smart Wizard Status Bar”](#) on page 7.

Profiles

The WG111v3 Smart Wizard uses profiles to store all the settings for a particular wireless network. There are two special profile names: Default and Profile.

- **Default:** The Profile named Default automatically scans for any available network. You cannot change this profile name.
- **Profile:** If you do not enter a name in the Profile Name box, then the name Profile is used to save your settings. If you do this more than once then you will be asked if you want to replace the previous settings stored in Profile.

Adding Profiles

You can store multiple profiles and recall the one which matches the network you want to join.

If you use your computer to connect to different wireless networks, you can create a profile for each wireless network. Then, you can easily load the profile that has all the settings that you need to join the network you are using at the time.

There are two types of wireless network profiles that you can set up:

- **Access Point (Infrastructure)** – Connect to an access point or router with the 802.11 infrastructure mode. For example, this mode is used when computers in a house connect to an access point that is attached to a router, which lets multiple computers share a single cable or DSL broadband Internet connection.
- **Computer-to-Computer (Ad Hoc)** – Connect directly to another computer with the 802.11 ad hoc mode. For example, Ad Hoc mode is used when two Windows computers are configured with file and print sharing enabled and you want to exchange files directly between them.

For more information on 802.11 wireless network modes, see the wireless reference document at: <http://documentation.netgear.com/reference/enu/wireless/index.htm>.

Setting up a Profile to Connect to an Access Point or Router

To set up the Wireless Adapter to connect to a wireless access point or router:

1. Use the  icon to open the Smart Wizard. The Settings page opens.

2. Enter the network settings.
 - a. In the Network Type section, be sure that Access Point (Infrastructure) is selected.
 - b. In the Profile box, type the name of the profile.
 - c. In the Network Name (SSID) field select a network or enter the SSID.

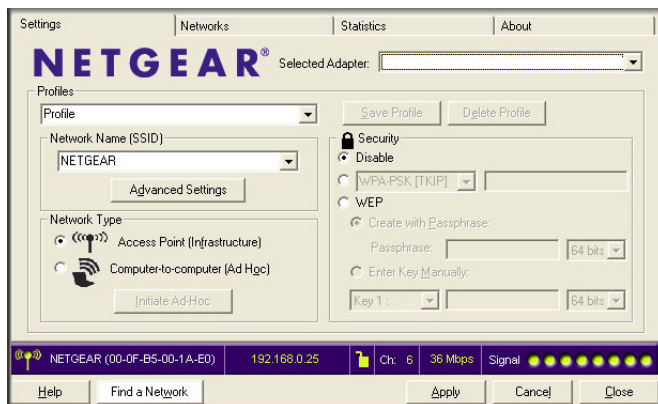


Figure 14



Note: You will not get a wireless network connection unless the network SSID matches exactly the SSID used by the access point.

3. Save your settings in a Profile.
 - a. Click Save Profile.

All the configuration settings are saved in this profile.
 - b. Click **Apply**.
 - c. Click Close to exit the wizard, or Cancel to return to the previous settings.
4. Check to make sure that you can connect to your network and to the Internet. For example, use your browser to connect to the Internet, or check for file and printer access on your network.

If you cannot connect, check the Status bar in the Smart Wizard. See [“The Smart Wizard Status Bar” on page 7](#). For problems with accessing network resources, the Windows Client and File and Print Sharing software might not be installed and configured properly on your computers. See the link to [“Internet Networking and TCP/IP Addressing” on page 33](#).

Setting up a Computer-to-Computer (Ad Hoc) Profile

The Computer-to-Computer setting uses Ad Hoc mode. Ad Hoc mode is an 802.11 networking framework in which devices or computers communicate directly with each other, without the use of an access point. For example, this mode is used when two Windows computers are configured with file and print sharing enabled and you want to exchange files directly between them.



Note: Ad Hoc mode will not work using DHCP settings. Ad Hoc mode requires either static IP addresses (such as 192.168.0.1) or the IPX protocol. For instructions on setting up static IP addresses on a Windows PC, refer to the PC Networking Tutorial included on the *NETGEAR CD*.

To create an Ad Hoc mode profile:


1. Use the  icon to open the Smart Wizard. The Settings page opens.
2. Enter the network settings.
 - a. Select Computer-to-Computer (Ad Hoc) for the Network Type.
 - b. Select or enter the Network Name (SSID) for the Ad Hoc network.
 - c. In the Profile box, type the name of the profile.
 - d. Click **Apply**



Figure 15

3. Save your settings in a Profile.
 - a. Click Save Profile.

All the configuration settings are saved in this profile.
 - b. Click **Apply**.
 - c. Click Close to exit the Smart Wizard, or Cancel to return to the previous settings.

4. Configure the PC network settings.

- a. Configure each PC with either a static IP address or with the IPX protocol.
- b. Restart the PCs.

5. Verify wireless connectivity between your peer devices.

You can use the ping utility to verify your wireless connection

- a. On the Windows taskbar click Start, and then click Run.
- b. Assuming the target PC is configured with 192.168.0.1 as its IP address, type `ping -t 192.168.0.1` and then click OK.

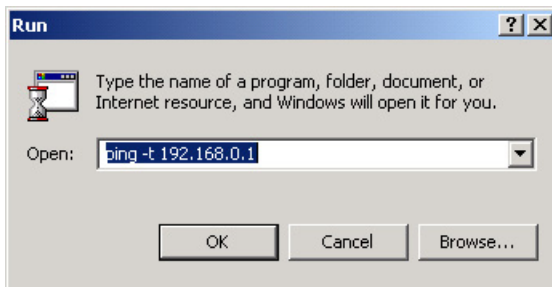


Figure 16

- c. This sends a continuous ping to the device with the 192.168.0.1 static IP address. The ping response should change to “reply.”

```
Request timed out.
Request timed out.
Reply from 192.168.0.1: bytes=32 time=40ms TTL=127
Reply from 192.168.0.1: bytes=32 time=41ms TTL=127
Reply from 192.168.0.1: bytes=32 time=30ms TTL=127
```

Figure 17

At this point the connection is established. For more information about using ping, see http://kbserver.netgear.com/kb_web_files/N101453.asp.



Note: If you cannot connect, see “[Placing the USB Adapter Cradle](#)” on page 8. Also, for problems with accessing network resources, the Windows Client and File and Print Sharing software might not be installed and configured properly on your computers. Please see the link to “[Internet Networking and TCP/IP Addressing](#)” on page 33.

Starting a Computer-to-Computer (Ad Hoc) Network Connection

1. On the Settings tab page of the Smart Wizard, select or type the Network Name (SSID).
2. Select the Computer-to-Computer (Ad Hoc) network type.
3. Click Initiate Ad Hoc. The Ad Hoc Setting dialog box opens:

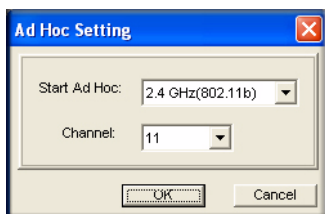


Figure 18

4. In the Start Ad Hoc field, choose the wireless standard (802.11b, or 802.11g) for your Ad Hoc computer-to-computer network.
5. In the Channel field, Automatic should work.



Note: If there is interference from another nearby wireless device, use the Networks tab page to see which channels are in use in your area. Then use a different channel. For example, if your neighbors use channel 6 and the signal strength is strong, then channels 4-8 would probably be poor choices for you.

6. Click OK. The Wireless Adapter automatically selects the highest connection speed.

Wireless Security

Many networks use wireless security to encrypt wireless data communications. If you try to connect to a network with wireless security the Smart Wizard detects it. Before you can use that network you must set up the Wireless Adapter with the same SSID, wireless security, and security settings as that network. If you do not know what these are, contact the person who set up the network.

The Wireless Adapter supports the following types of wireless security:

- Wi-Fi Protected Access 2 Pre-Shared Key (WPA2-PSK)
- Wi-Fi Protected Access Pre-Shared Key (WPA-PSK)
- Wired Equivalent Privacy (WEP)

For more information about wireless security, see the Web link to “[Wireless Communications](#)” on [page 33](#) or the wireless reference document at:

<http://documentation.netgear.com/reference/enu/wireless/index.htm>

In addition to the wireless security features, networks should use LAN network security features such as requiring a user name and password to access the shared resources in the network.

The procedures below explain how to configure the wireless encryption settings of your Wireless Adapter.

Know Your Wireless Network Settings

You will need to know the settings for your wireless network. The form on the next page is set up so that you can record this information. You can use either of these two methods to keep track of these settings:

- Print the form on the next page and fill it out. If you are uncomfortable writing out secure information, put a “hint” to yourself instead of the actual information. Put the form where it will be very easy for you to remember, or save two copies and put them in different places.
- Save the information in a document on your computer. Later you can search for words such as SSID to locate the information.

Wireless Network Name (SSID) and Security Settings

Print this form, fill in the configuration parameters and put it in a safe place for possible future reference. For an existing wireless network, the person who set up the network will have this information.

- **Network Name (SSID):** The Service Set Identification (SSID) identifies the wireless local area network. **Any (First available network)** is the default WG111v3 wireless network name (SSID). You may customize it using up to 32 alphanumeric characters. Write your customized wireless network name (SSID) on the line below.



Note: The SSID in the wireless access point is the SSID you configure in the wireless USB adapter. For the access point and wireless nodes to communicate with each other, all must be configured with the same SSID.

Wireless network name (SSID): _____

- **If WEP Authentication is Used.**
 - **WEP Encryption key size.** Identify one: **64-bit** or **128-bit**. The encryption key size must be the wireless network settings.
 - **Data Encryption (WEP) Keys.** There are two methods for creating WEP data encryption keys. Whichever method you use, record the key values in the spaces below.
 - **Passphrase method.** _____ These characters *are* case sensitive. Enter a word or group of printable characters and click the Generate Keys button. Not all wireless devices support the passphrase method.
 - **Manual method.** These values *are not* case sensitive. For 64-bit WEP, enter 10 hex digits (any combination of 0-9 or a-f). For 128-bit WEP, enter 26 hex digits.


Key 1: _____ Key 2: _____

Key 3: _____ Key 4: _____
- **If WPA2-PSK or WPA-PSK Authentication is Used.**
 - **Passphrase:** _____ These characters *are* case sensitive. Enter a word or group of printable characters. When you use WPA-PSK, the other devices in the network will not connect unless they are set to WPA-PSK as well and are configured with the correct Passphrase.

Use the procedures below to set up basic security settings in the WG111v3.

Setting up WEP Encryption Security

Follow the steps below to configure WEP Encryption Security.

1. Run the Wireless Adapter Smart Wizard.
 - a. Make sure the software is installed and the Wireless Adapter is into the USB port in your computer.
 - b. Use the  icon to open the Smart Wizard. The Settings tab page opens.

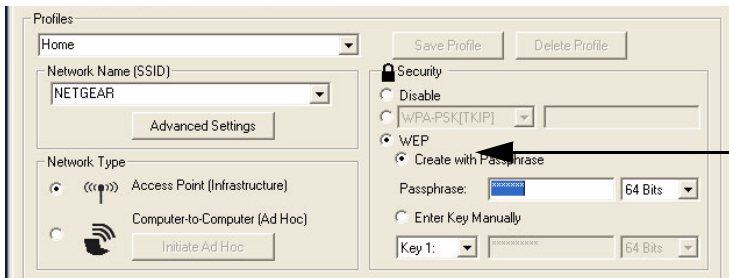


Figure 19

2. Configure the Security settings.
 - a. In the Profile box, select the profile or type in a profile name.
 - b. In the Network Name (SSID) field select the network, or enter the SSID.



Note: You will not get a wireless network connection unless the network SSID matches exactly what is configured in the access point.

- c. In the Security section, select WEP.
3. Select the WEP encryption strength you will use.

The choices are:

- 64-bit WEP data encryption
- 128-bit WEP data encryption



Note: The 128-bit encryption keys require more processing, and slow performance slightly.

4. Select Create with Passphrase and enter the passphrase. The configuration utility will automatically generate the WEP keys.




Note: The characters are case sensitive. Be sure to use the same passphrase for all the wireless devices in the network.

If the passphrase method is not available in the other devices, you must manually enter the keys to match exactly what is in the access point and other 802.11b wireless devices.

5. Save your settings in a Profile.
 - a. Click Save Profile. All the configuration settings are saved in this profile.
 - b. Click **Apply**.
 - c. Click Close to exit the configuration utility.

Setting up WPA2-PSK Security

Follow the steps below to configure WPA2-PSK Security.

1. Run the Wireless Adapter Smart Wizard.
 - a. Make sure the software is installed and the Wireless Adapter is fully inserted in a USB port in your computer.
 - b. Use the  icon to open the Smart Wizard. The Settings tab page opens.

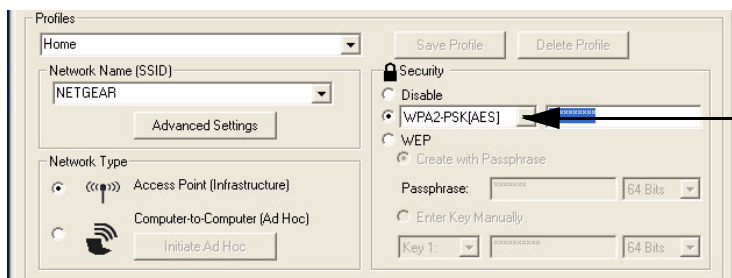



Figure 20

2. Configure the Security settings.
 - a. In the Profile box, select the profile or type in a profile name.

- b. In the Network Name (SSID) field select the network, or enter the SSID.

	<p>Note: You will not get a wireless network connection unless the network SSID matches exactly what is configured in the access point.</p>
---	--


- c. In the Security section, select WPA2-PSK [AES].

For more information about WPA2-PSK security, see the Web link to [“Wireless Communications”](#) on page 33.

3. Save your settings in a Profile.
 - a. Click the Save Profile button. All the configuration settings are saved in this profile.
 - b. Click **Apply**.
 - c. Click Close to exit the Smart Wizard.

Setting up WPA-PSK Security

Follow the steps below to configure WPA-PSK Security.

1. Run the Wireless Adapter Smart Wizard.
 - a. Make sure the software is installed and the Wireless Adapter is fully inserted in a USB port in your computer.
 - b. Use the  icon to open the Smart Wizard. The Settings tab page opens.

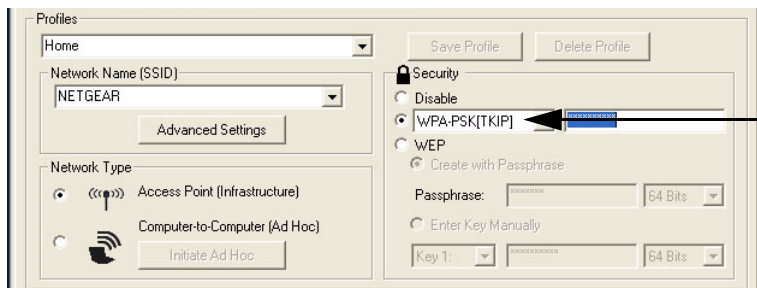
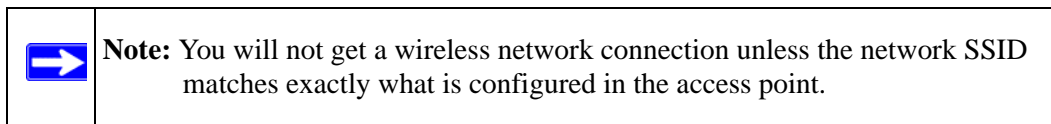


Figure 21

2. Configure the Security settings.
 - a. In the Profile box, select the profile or type in a profile name.

- b. In the Network Name (SSID) field select the network, or enter the SSID.



- c. In the Security section, select WPA-PSK [TKIP].

For more information on WPA security, see the Web link to [“Wireless Communications” on page 33](#).

3. Save your settings in a Profile.

- a. Click Save Profile. All the configuration settings are saved in this profile.
- b. Click **Apply**.
- c. Click Close to exit the Smart Wizard.

Advanced Settings

On the Settings tab click Advanced Settings to view the Advanced Settings page. Most people do not need to change these settings. You may need to adjust settings if you cannot connect without making changes, or if your Internet Service Provider (ISP) or network administrator recommend changes. You can click the Help button for more information about advanced settings.

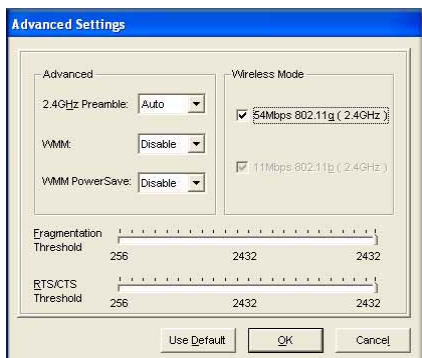


Figure 22

Wi-Fi Multimedia (WMM) is a Quality of Service (QoS) feature that prioritizes wireless data packets based on four access categories: voice, video, best effort, and background. Applications without WMM and applications that do not require QoS, are assigned to the best-effort category, which receives a lower priority than voice and video.

To receive the benefits of WMM QoS:

- The application must support WMM.
- You must enable WMM in your Wireless Adapter.
- You must enable WMM in your wireless access point or router.

Statistics Page

The Statistics page provides real time and historical trend information on the data traffic and performance of your wireless adapter.

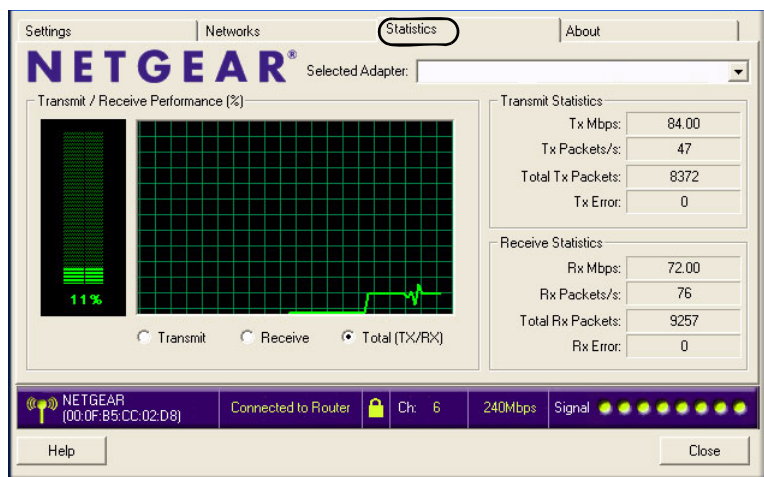


Figure 23

- **Transmit/Receive Performance (%):** A real time graph identifying the total, receive, and transmit utilization as a percentage the total possible.
- **Transmit, Receive, and Total (Tx/Rx):** Radio buttons let you select whether to display the transmit performance, the receive performance, or both in the same graph.
- **Transmit Statistics:** Identifies transmit megabits per second (Mbps), transmit packets per second (Tx Packets/s), total transmitted packets, and transmit errors.
- **Receive Statistics:** Identifies receive megabits per second (Mbps), receive packets per second (Rx Packets/s), total received packets, and reception errors.

About Page

The About page displays the current software version information.

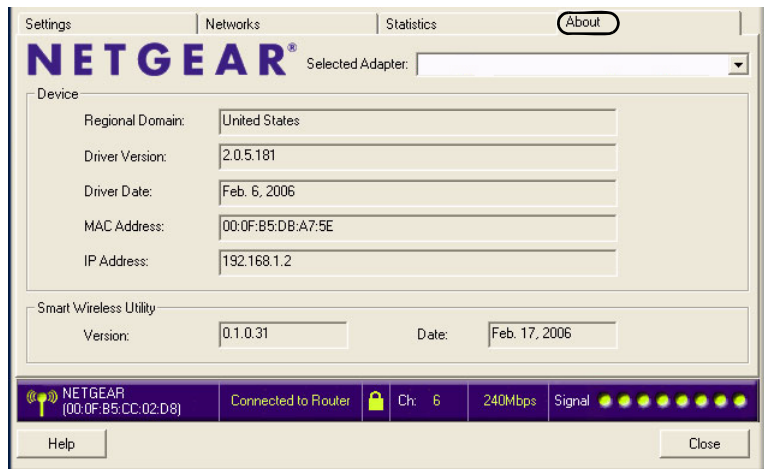


Figure 24

The following information is displayed in the About page:

- **Regional Domain:** This is the region setting for the wireless adapter. The approved channels for the region are automatically scanned. Governments regulate the channels used for wireless transmission. Operating the wireless adapter in a different region may violate local laws.
- **Driver Version:** The wireless adapter driver version.
- **Driver Date:** The wireless adapter driver date.
- **MAC Address:** The MAC address of the adapter. The Media Access Control address is a unique 48-bit hardware address assigned to every network interface card. Some wireless networks will restrict access based on a list of known MAC addresses. If you are communicating with such a network, you would have to provide the address shown here to the network administrator before you would be allowed to connect. Restricting access by MAC address adds an obstacle against unwanted access to your network. However, if the only wireless security that your network uses is MAC addressing, your data is easy for hackers to read.
- **IP Address:** The IP address assigned to this adapter.
- **Smart Wireless Utility:** The version and date of the Smart Wizard.

Troubleshooting

This chapter provides information about troubleshooting your wireless USB adapter. For information about connecting to wireless networks and the Internet, see “[Connecting to Wireless Networks and the Internet](#)” on page 2-6.

Troubleshooting Tips

Use the information below to solve common problems you may encounter. Also, refer to the knowledge base on the NETGEAR website at <http://www.netgear.com/support/main.asp>.

Table 4-1. Troubleshooting Tips

Problem	Action
The LED is not lit	The WG111v3 is not connected to the USB port properly or the WG111v3 software is not loaded. <ul style="list-style-type: none">• Remove and reinsert the WG111v3.• Check the Windows device manager to see if the WG111v3 is recognized and enabled. Reload the WG111v3 software, if necessary.• Try to install the WG111v3 in a different USB slot on your system if one is available.
The LED blinks but the WG111v3 is not connected to an access point.	The WG111v3 is trying to connect to an access point, but cannot connect. <ul style="list-style-type: none">• The access point may not be powered on.• Or, the access point and the WG111v3 are not configured with the same wireless parameters. Check the SSID and WEP settings.
I cannot connect to an access point. The access point is available and there is good signal strength.	<ul style="list-style-type: none">• If the access point is WPA-PSK protected, you need the correct WPA-PSK passphrase. Otherwise, the WG111v3 will still be connected to the previous access point and you will not be able to change to the WPA-PSK access point.• If the access point is WEP protected (either 64 or 128 bit encryption), you will be prompted to enter the WEP encryption security information.
The Smart Wizard keeps asking me to save settings.	If you change the settings the Smart Wizard offers you the chance to save the changes. To avoid this prompt, simply click Apply before you close the Smart Wizard.

Table 4-1. Troubleshooting Tips (continued)

Problem	Action
Two WG111v3 icons are in the system tray.	You have an older software version installed on your system and it needs to be removed. See “Removing the Software” on page 2-9 or “Upgrading the Wireless Adapter Software” on page 2-10 .
I can connect to the access point, but not the other computers on the network or to the Internet.	This could be a physical layer problem or a network configuration problem. <ol style="list-style-type: none"> 1. Check to make sure that the access point is physically connected to the Ethernet network. 2. Make sure that the IP addresses and the Windows networking parameters are all configured correctly. See the link to “Internet Networking and TCP/IP Addressing” on page B-33. 3. Restart the cable or DSL modem, router, access point, and computer.
Viewing the IP address.	To view the Wireless Adapter IP address, click the WG111v3 icon to open the Smart Wizard. Then check the IP address in the About page.
No IP address is assigned to the Wireless Adapter.	This may occur if you upgraded your Wireless Adapter software and did not reboot your system. <ul style="list-style-type: none"> • Either restart your computer, or connect to a different access point. • It does not usually help to shut down the Smart Wizard or disable/enable the card.

Ad Hoc Mode is Not Working Correctly

You must click the Initiate Ad Hoc button before you click **Apply**. Here is how you start an Ad Hoc network:

1. Fill in the Network Name (SSID).
2. Select the Computer-to-Computer (Ad Hoc) Network Type.
3. Click Initiate Ad Hoc.
4. Accept the default settings or make your changes, click OK, and then click **Apply**.



Note: Be sure all computers in your Ad Hoc network are configured with static IP addresses in the same subnet.

Default Configuration Settings and Technical Specifications

Default Configuration Settings

The following table lists the default settings of your Wireless Adapter.

Feature	Description
Smart Wizard	Enabled
Wireless	
Wireless Communication	Enabled
Wireless Network Name (SSID)	Any (first available network)
Security	Disabled
Network Type	Infrastructure
Transmission Speed	Auto ^a
Country/Region	United States (varies by region)
Operating Mode	g and b, up to 54 Mbps
Data Rate	up to 54 Mbps
WMM	Disabled
WMM Power Save	Disabled

a. Maximum wireless signal rate (IEEE Standard 802.11n draft specification). Actual throughput will vary. Network conditions and environmental factors, including volume of network traffic, building materials and construction, and network overhead, lower actual data throughput rate.

Technical Specifications

This table below describes technical specifications for the NETGEAR 54 Mbps Wireless USB2.0 Adapter WG111v3.

Antennas	Printed internal antenna
Standards	802.11g, 802.11b
Radio Data Rate	1, 2, 5.5, 6, 9, 11, 12, 18, 24, 36, 48, and 54 Mbps (Auto Rate Sensing)
Frequency	2.4GHz to 2.5GHz CCK and OFDM Modulations
LED	Single LED -- solid indicates connected to network -- blinking indicates attempting to connect to network
Power	5V bus powered
Emissions	FCC Part 15 Class B, CE
Bus interface	USB 2.0
Provided drivers	Microsoft Windows 2000, XP, and Vista (32/64 bits)
Operating Environment	Operating temperature: 0 to 40 degrees C
Encryption	40-bit (also called 64-bit) and 128-bit WEP data encryption, WPA2-PSK, and WPA-PSK
Warranty	Limited 1-year warranty

Related Documents

This appendix provides links to reference documents you can use to gain a more complete understanding of the technologies used in your NETGEAR product.

Document	Link
Windows XP and Vista Wireless Configuration Utilities	http://documentation.netgear.com/reference/enu/winzerocfg/index.htm
Internet Networking and TCP/IP Addressing	http://documentation.netgear.com/reference/enu/tcpip/index.htm
Wireless Communications	http://documentation.netgear.com/reference/enu/wireless/index.htm
Preparing a Computer for Network Access	http://documentation.netgear.com/reference/enu/wsdhcp/index.htm
Virtual Private Networking (VPN)	http://documentation.netgear.com/reference/enu/vpn/index.htm
Glossary	http://documentation.netgear.com/reference/enu/glossary/index.htm

