

NETGEAR

Connect with Innovation™

A6200 WiFi USB Adapter

802.11ac Dual Band

A6200

**PERFORMANCE
LEVEL****Upgrade to
802.11ac WiFi**

The NETGEAR A6200 WiFi Adapter delivers next generation WiFi speeds. Compatible with next generation WiFi devices and backward compatible with 802.11 a/b/g/n devices, it enables multiple HD video streams throughout your home simultaneously.

With up to 300/867 Mbps[†] speed and dual band technology, the A6200 avoids interference, ensuring top WiFi speeds and reliable connections. The optional antenna positioning offers optimal performance and reliability, while the unique design features of the adapter make it easy to use with both laptops and desktops. The A6200 WiFi Adapter is perfect for upgrading your existing laptop or desktop to 802.11ac.

FEATURES**SPEED**

NEXT GENERATION WiFi—
300/867 Mbps[†] speeds

RELIABLE CONNECTIONS

ANTENNA—Optional antenna positioning for additional performance



DUAL BAND—Reduces interference for better connections to more WiFi devices

EASE OF USE

COMPATIBLE—Works with 802.11 a/b/g/n and ac devices



NETGEAR GENIE®—Dashboard controls to connect a WiFi device to your home network



PUSH 'N' CONNECT—Easy push button WiFi connections (WPS)



EASY INSTALL—Includes NETGEAR genie software on a CD for simple installation

WiFi RANGE

ULTIMATE RANGE—WiFi coverage throughout your home

GREAT FOR

Emailing, chatting, surfing, music and video streaming



Online gaming



HD Streaming



Multiple HD streaming simultaneously



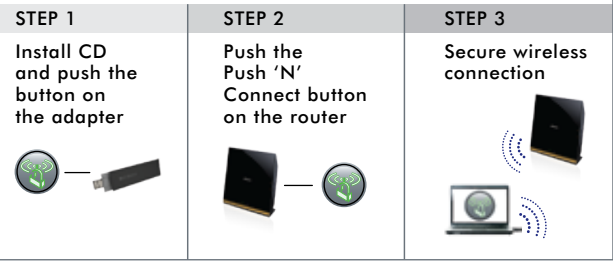
Flexible placement design for laptops and desktops

THE NETGEAR DIFFERENCE - A6200

- Ultimate range and performance with 802.11ac
- Adjustable antenna for improved performance
- Stream multiple HD videos simultaneously
- Works with 802.11n
- Push 'N' Connect – push button security
- Easy NETGEAR genie® setup
- Expert technical support team

PUSH 'N' CONNECT

A secured connection at the push of a button¹



WiFi Technology	FEATURES								APPLICATIONS			
	Speed	Range	NETGEAR genie®	Secure Connection	Easy Install	Desktop Dock	Dual Band	11ac WiFi	Email, Chat, Music, Video	Online Gaming	HD Streaming	Multiple HD Streaming
N300	Up to 300 Mbps†		✓	✓	✓	✓‡			✓	✓		
N600	Up to 300/300 Mbps†		✓	✓	✓	✓‡	✓		✓	✓	✓	
N900	Up to 450/450 Mbps†		✓	✓	✓	✓‡	✓		✓	✓	✓	✓
AC1200	Up to 300/867 Mbps†		✓	✓	✓	✓	✓	✓	✓	✓	✓	✓

†Some Models Supported

Package Contents

- A6200 WiFi USB Adapter—11ac Dual Band (A6200)
- USB cable with desktop dock
- Installation guide
- NETGEAR genie® installation CD

Physical Specifications

- Dimensions: 95.3 x 31.4 x 14.3 mm (3.75 x 1.23 x .56 in)
- Weight: 19.5 g (0.69 oz)

Standards

- IEEE® 802.11 b/g/n 2.4 GHz
- IEEE 802.11 a/n/ac 5.0 GHz

Warranty

- Limited 1-year warranty minimum or longer if provided by law. Plus 90-day basic customer support. For warranty and support details in your region visit support.netgear.com.

System Requirements

- Intel® Pentium® class PC
- Available USB 1.1 or USB 2.0 slot
- Microsoft® Windows® 7, XP, Vista®: (32/64-bit)

NETGEAR Green Features

- 80% Recycled Packaging
- CEC (California Efficiency)
- RoHS
- WEEE



NETGEAR®

350 E. Plumeria Drive
 San Jose, CA 95134-1911 USA
 1-888-NETGEAR (638-4327)
 E-mail: info@NETGEAR.com
 www.NETGEAR.com

24/7 TECHNICAL SUPPORT*
*Basic technical support free for 90 days only

©2012 NETGEAR, Inc. NETGEAR, the NETGEAR Logo, Connect with Innovation, ReadySHARE, and NETGEAR Genie, are trademarks and/or registered trademarks of NETGEAR, Inc. and/or subsidiaries in the United States and/or other countries. Mac and the Mac logo are trademarks of Apple Inc., registered in the U.S. and other countries. BROADCOM, and the 5GWiFi logo are trademarks or registered trademarks of Broadcom Corporation in the United States and/or other countries. Other brand names mentioned herein are for identification purposes only and may be trademarks of their respective holder(s). Information is subject to change without notice. All rights reserved. 350 E. Plumeria Drive, San Jose, CA 95134 USA

This product is packaged with a limited warranty, the acceptance of which is a condition of sale. This product has been tested for quality assurance and this product or its components may have been recycled.

*Basic technical support provided for 90 days from date of purchase.

†Maximum wireless signal rate derived from draft IEEE 802.11ac specifications, and final IEEE 802.11ac specifications may be different. Actual data throughput will likely be lower, and depends on network and environmental conditions, including volume of network traffic and building construction. Data throughput may also be limited by the product's interface, e.g. to less than 480 Mbps for a USB 2.0 interface.

¹Works with devices supporting Wi-Fi Protected Setup® (WPS).